

TIIG  
INJURY SURVEILLANCE IN THE NORTH WEST OF ENGLAND

ROYAL PRESTON HOSPITAL EMERGENCY DEPARTMENT

MONTHLY BULLETIN: OCTOBER 2013 TO SEPTEMBER 2014

This bulletin provides a breakdown of all attendances to Royal Preston Hospital Emergency Department (ED) between October 2013 and September 2014.

In the twelve month period there were 27,456 injury attendances to Royal Preston Hospital ED. The month with the highest number of attendances, calculated as a daily average, was June 2014 (85 per day) compared to December 2013, the month with the fewest (63 per day; **Figure 1**).

There were more males than females attending the ED (males=15,234; 55%; **Figure 1**). The highest proportions of attendees were aged between 30 and 59 years (n=8,048; 29%) and between 15 and 29 years (n=7,390; 27%; **Figure 2**).

**Table 1** shows the injury group of attendances between October 2013 and September 2014. Over two in five (42%) injuries were sustained by a fall (n=11,647) and just under one-third (32%) were categorised as 'other' injury (n=8,711). Just over one in ten (11%) injuries were caused by sport (n=3,058) while 9% were due to road traffic collisions (n=2,554).

One-third (33%) of incidents occurred in the home (n=9,118) followed by just under a quarter (24%) which occurred in a public place (n=6,460; **Table 2**).

The discharge destination for ED attendances is displayed in **Table 3**. Over three-fifths (62%) of

attendees were discharged from hospital with no follow-up treatment required (n=16,977) while 12% were referred to the fracture clinic (n=3,229) and 10% were admitted to Royal Preston Hospital or the Avondale Unit (n=2,644).

**Assault attendances**

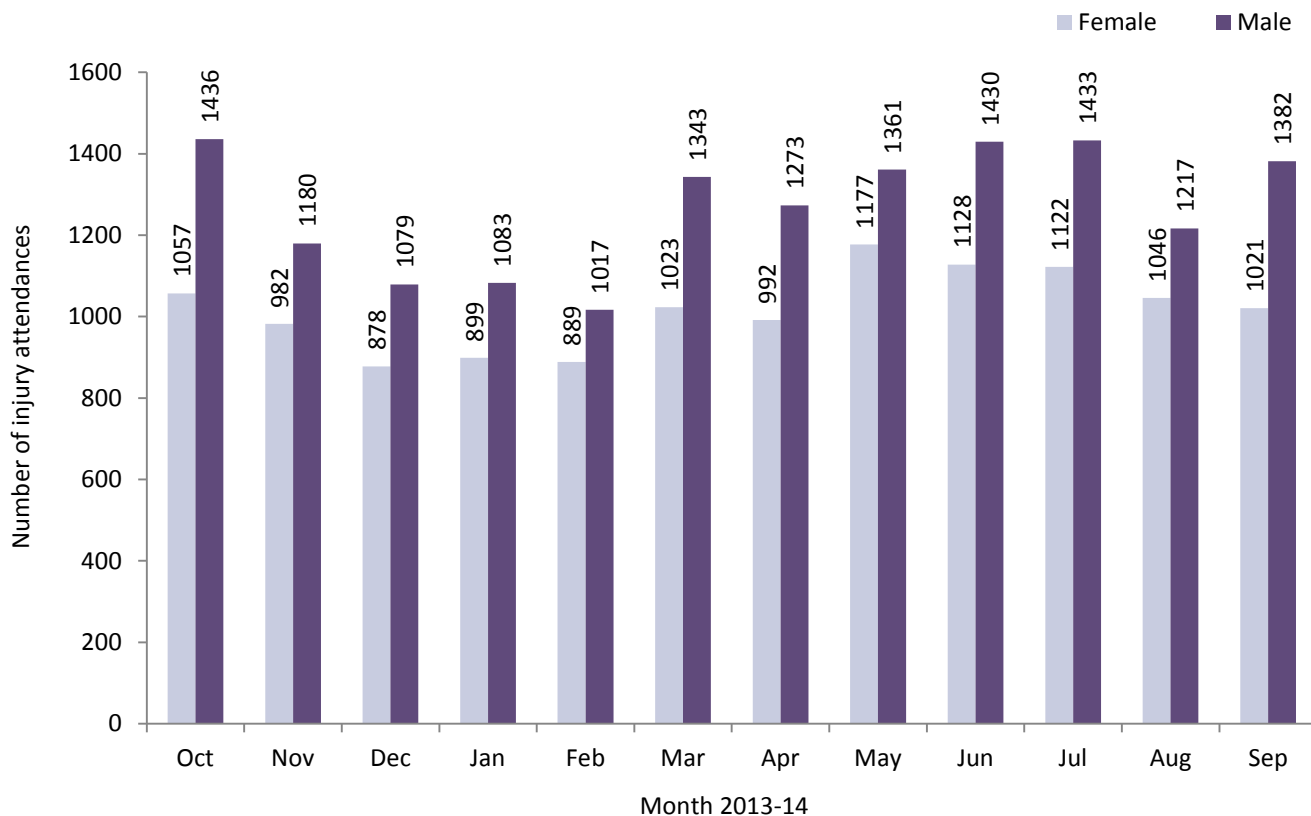
Between October 2013 and September 2014 there were 1,264 assault attendances to Royal Preston Hospital ED.

The majority (71%) of assault attendees were male (males=901; **Figure 3**), with over half (53%) aged between 15 and 29 years (n=673) and 38% aged between 30 and 59 years (n=486; **Table 4**).

The assault location is shown in **Table 5**. Under half (45%) of assaults occurred in a public place (n=564), while nearly one in five (18%) occurred in the home (n=225) and one in ten (10%) occurred in a public building (including pub/club/bar; n=128).

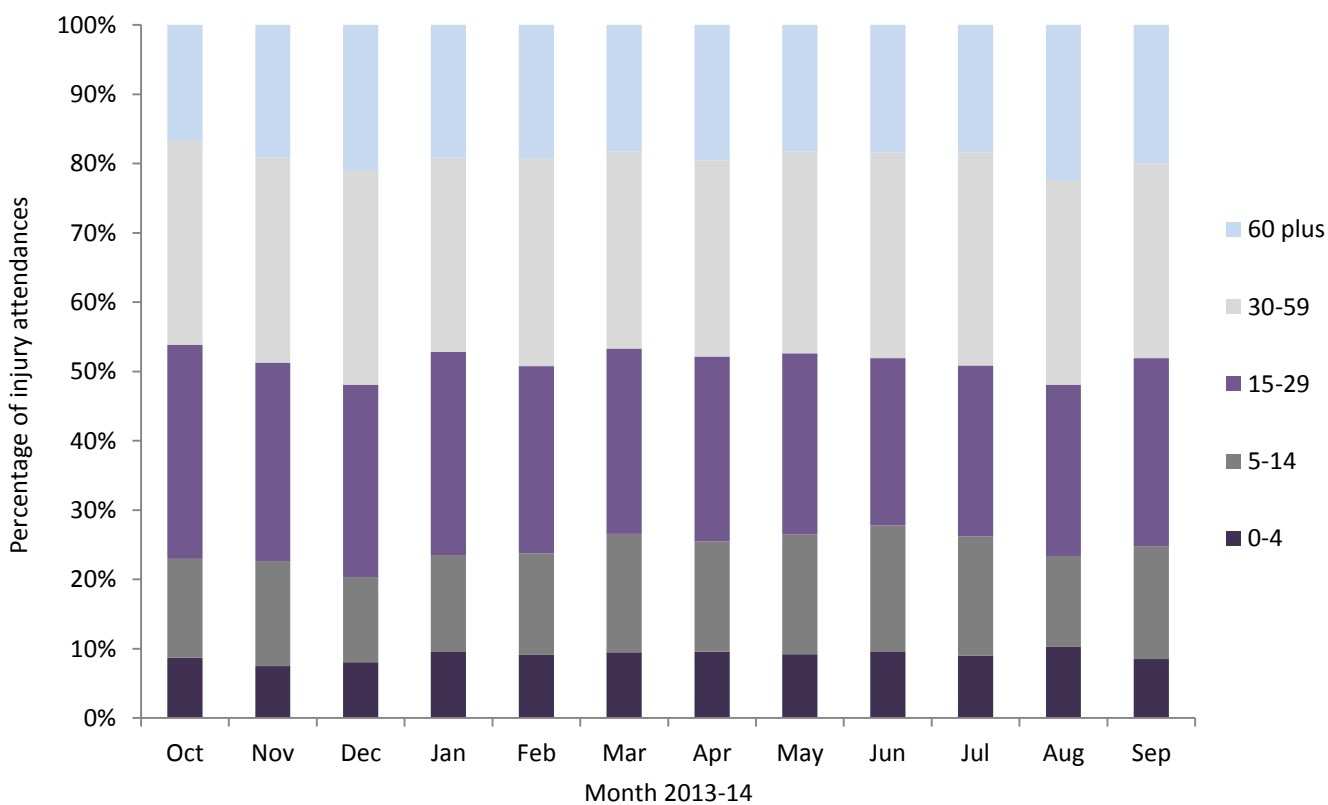
**Table 6** illustrates the disposal method of assault attendances. Over half (53%) were discharged from hospital with no follow-up treatment required (n=666) and just over one-quarter (26%) were referred for follow-up treatment (n=330). Just over one in ten (11%) assault attendees were admitted to hospital (n=134).

**Figure 1: ED injury attendances by gender and month, October 2013 to September 2014<sup>^</sup>**



<sup>^</sup> There were 8 records where the gender was unknown; these have been omitted from the chart.

**Figure 2: ED injury attendances by age group and month, October 2013 to September 2014**



**Table 1: ED injury attendances by injury group and month, October 2013 to September 2014<sup>†</sup>**

Injury group	Oct	Nov	Dec	Jan	Feb	Mar	Apr	May	Jun	Jul	Aug	Sep	Total	%
Fall	923	910	844	872	855	958	989	1104	1113	1068	1012	999	11647	42%
Other injury	921	657	561	601	564	736	660	825	874	881	714	717	8711	32%
Sports injury	294	256	189	180	217	333	279	261	265	258	184	342	3058	11%
Road traffic collision	201	220	209	201	172	223	227	230	188	224	234	225	2554	9%
Assault	135	105	142	102	80	101	95	104	100	107	99	94	1264	5%
Deliberate self-harm	20	15	13	27	18	16	15	15	18	18	21	26	222	1%
<b>Total</b>	<b>2494</b>	<b>2163</b>	<b>1958</b>	<b>1983</b>	<b>1906</b>	<b>2367</b>	<b>2265</b>	<b>2539</b>	<b>2558</b>	<b>2556</b>	<b>2264</b>	<b>2403</b>	<b>27456</b>	<b>100%</b>

<sup>†</sup> Due to low numbers, firework injuries (n=<5) and major incident (n=<5) have been included in the 'other' injury category.

**Table 2: ED injury attendances by incident location and month, October 2013 to September 2014<sup>1,2</sup>**

Incident location	Oct	Nov	Dec	Jan	Feb	Mar	Apr	May	Jun	Jul	Aug	Sep	Total	%
Home	822	694	678	718	711	750	751	815	803	820	782	774	9118	33%
Public place	545	503	485	490	386	550	568	636	587	611	551	548	6460	24%
Sport	266	227	161	160	191	302	264	245	261	228	181	307	2793	10%
Other	236	204	178	149	156	194	218	261	284	274	320	249	2723	10%
Work	254	201	159	173	180	190	180	198	199	220	182	172	2308	8%
Educational establishment	181	164	123	148	126	190	88	131	<125	132	***	121	1532	6%
Home - other person's	50	66	56	56	43	45	34	60	43	58	52	41	604	2%
Garden	25	15	19	11	20	33	57	67	95	77	55	45	519	2%
Public building	40	30	56	35	44	38	22	31	34	25	44	34	433	2%
Holiday	22	14	12	15	11	20	14	36	37	42	38	45	306	1%
Public park/playground	21	9	***	6	<10	16	37	31	39	33	27	34	260	1%
Nursery	15	17	9	7	12	13	13	17	24	14	13	7	161	1%
Prison	***	7	8	5	10	12	5	6	<10	9	5	6	86	0%
Hospital	9	7	10	6	8	7	10	***	5	6	***	10	85	0%
Special event	***	***	***	***	0	***	***	***	10	<10	***	***	35	0%
Public transport	***	***	0	***	***	***	***	0	***	***	***	5	28	0%
Bus station	0	0	***	0	0	***	***	0	0	0	***	***	5	0%
<b>Total</b>	<b>2494</b>	<b>2163</b>	<b>1958</b>	<b>1983</b>	<b>1906</b>	<b>2367</b>	<b>2265</b>	<b>2539</b>	<b>2558</b>	<b>2556</b>	<b>2264</b>	<b>2403</b>	<b>27456</b>	<b>100%</b>

<sup>1</sup> 'Educational establishment' includes: educational establishment, college/university, school - other, school playground and school sport; 'Public place' includes: public place and playing out; 'Public building' includes: public building pub/club/bar - inside and pub/club/bar - outside.

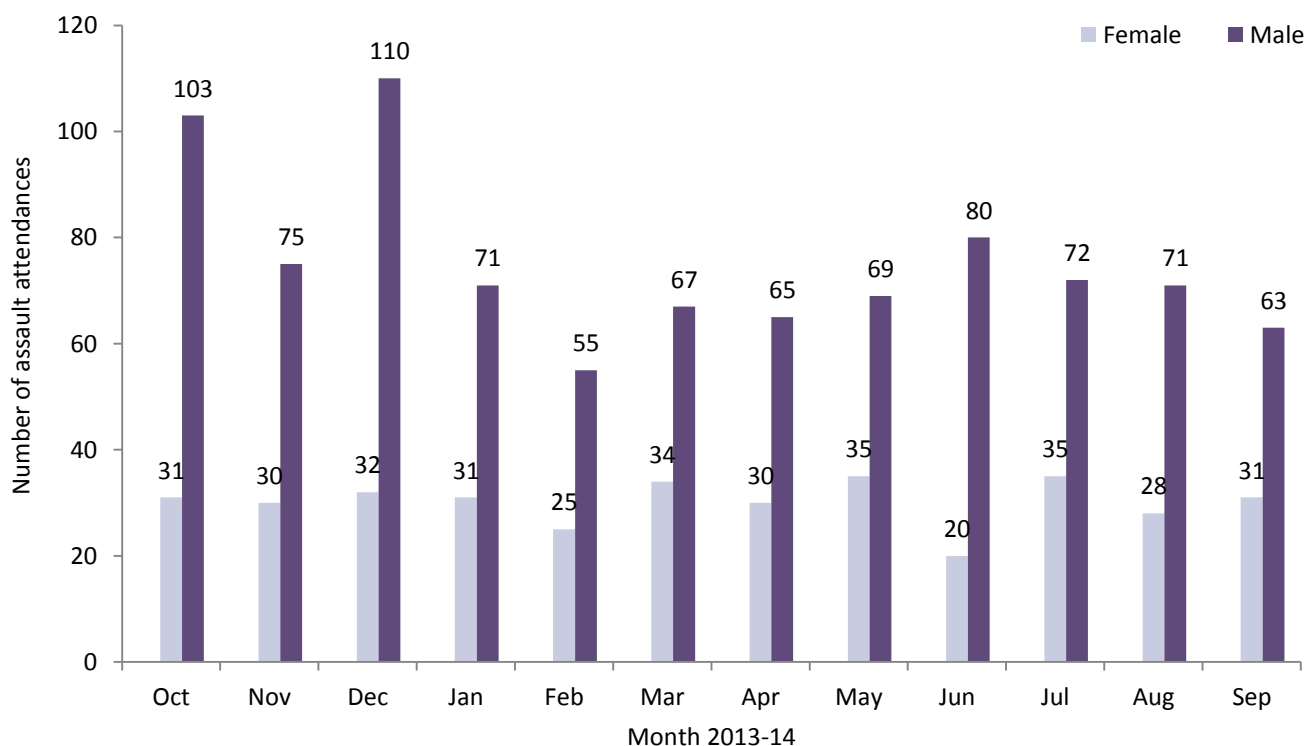
<sup>2</sup> Please note that all numbers less than five have been suppressed (with \*\*\*) in line with patient confidentiality. If there is only one number less than five in a category then two numbers have been suppressed to prevent back calculations from totals.

**Table 3: ED injury attendances by discharge destination and month, October 2013 to September 2014<sup>3,4</sup>**

Discharge destination	Oct	Nov	Dec	Jan	Feb	Mar	Apr	May	Jun	Jul	Aug	Sep	Total	%
Discharged - no follow-up	1580	1328	1207	1200	1193	1471	1373	1569	1501	1591	1427	1537	16977	62%
Referred to fracture clinic	281	255	218	219	233	287	272	318	330	308	243	265	3229	12%
Admitted to RPH	215	211	217	201	181	193	218	229	267	236	223	253	2644	10%
Discharged - follow-up by GP	113	103	101	121	85	126	110	120	128	111	97	71	1286	5%
Referred to other outpatient clinic	83	57	57	70	54	79	56	81	79	76	58	56	806	3%
Other	40	57	38	52	52	64	80	64	53	58	44	50	652	2%
Referred to ED clinic	58	49	44	36	30	41	68	52	62	64	60	74	638	2%
Left before being treated	56	47	43	39	36	48	34	43	72	62	54	50	584	2%
Referred to other healthcare professional	49	43	23	34	34	37	43	43	53	36	39	40	474	2%
Transferred to other HCP	8	***	***	7	***	13	5	9	6	9	6	***	73	0%
Left having refused treatment	8	9	***	***	***	***	***	<10	***	***	8	***	58	0%
Police custody	***	***	***	0	***	***	***	***	***	***	5	***	28	0%
Admitted to CDGH	***	0	***	***	***	***	0	0	0	0	0	0	7	0%
<b>Total</b>	<b>2494</b>	<b>2163</b>	<b>1958</b>	<b>1983</b>	<b>1906</b>	<b>2367</b>	<b>2265</b>	<b>2539</b>	<b>2558</b>	<b>2556</b>	<b>2264</b>	<b>2403</b>	<b>27456</b>	<b>100%</b>

## ASSAULTS

**Figure 3: ED assault attendances by gender and month, October 2013 to September 2014**



<sup>3</sup> 'Admitted to CDGH' includes: admitted, admitted to Chorley and South Ribble Hospital (CDGH) and admitted to Healey/Yarrow Ward; 'Admitted to RPH' includes: admitted to Royal Preston Hospital (RPH) and admitted to the Avondale Unit; 'Other' includes: primary care, other, dead on arrival and died in department.

HCP = Health care provider.

<sup>4</sup> Please note that all numbers less than five have been suppressed (with \*\*\*) in line with patient confidentiality. If there is only one number less than five in a category then two numbers have been suppressed to prevent back calculations from totals.

**Table 4: ED assault attendances by age group and month, October 2013 to September 2014<sup>5</sup>**

Age group	Oct	Nov	Dec	Jan	Feb	Mar	Apr	May	Jun	Jul	Aug	Sep	Total	%
0-4	***	0	0	***	0	0	0	0	0	0	***	***	***	0%
5-14	***	***	***	7	7	<20	5	<10	<10	***	***	***	62	5%
15-29	78	64	78	56	43	43	40	56	53	55	58	49	673	53%
30-59	47	40	54	34	30	40	45	36	40	47	35	38	486	38%
60 plus	7	***	<10	***	0	***	5	***	***	***	***	***	<40	3%
<b>Total</b>	135	105	142	102	80	101	95	104	100	107	99	94	1264	100%

**Table 5: ED assault attendances by incident location and month, October 2013 to September 2014<sup>5,6</sup>**

Incident location	Oct	Nov	Dec	Jan	Feb	Mar	Apr	May	Jun	Jul	Aug	Sep	Total	%
Public place	72	55	63	47	30	38	31	52	53	39	45	39	564	45%
Home	25	16	20	20	25	15	22	13	6	21	20	22	225	18%
Other	13	9	11	12	7	16	24	16	13	13	18	16	168	13%
Public building	9	9	29	8	14	9	***	11	11	9	9	<10	128	10%
Work	12	***	7	6	***	6	9	***	7	11	5	***	74	6%
Home - other person's	***	6	5	***	***	5	***	***	***	5	0	***	41	3%
Prison	***	***	***	0	***	***	***	***	***	5	0	***	24	2%
Educational establishment	0	***	***	***	0	7	***	***	***	0	***	0	22	2%
Public park/playground	0	***	0	0	0	0	0	***	0	0	***	***	5	0%
Bus station	0	0	0	0	0	0	0	0	0	0	0	***	***	0%
Garden	0	0	0	0	0	0	***	0	***	0	0	0	***	0%
Holiday	0	0	0	0	0	0	0	0	0	***	0	***	***	0%
Hospital	0	***	0	0	0	***	0	0	0	***	0	***	***	0%
Public transport	0	0	0	0	0	0	0	0	***	0	0	0	***	0%
Special event	0	0	0	***	0	0	0	0	0	0	0	0	***	0%
Sport	0	0	0	0	0	0	0	0	0	***	0	0	***	0%
<b>Total</b>	135	105	142	102	80	101	95	104	100	107	99	94	1264	100%

**Table 6: ED assault attendances by disposal method and month, October 2013 to September 2014<sup>5</sup>**

Disposal method	Oct	Nov	Dec	Jan	Feb	Mar	Apr	May	Jun	Jul	Aug	Sep	Total	%
Admitted	12	9	15	10	5	<15	<10	10	14	11	12	15	134	11%
Died	0	0	0	0	0	0	0	0	0	0	0	0	0	0%
Discharged	67	58	72	59	43	55	53	59	40	56	49	55	666	53%
Follow-up	38	25	36	23	23	25	31	26	34	29	21	19	330	26%
Other	18	13	19	10	9	<10	***	9	12	11	17	5	134	11%
<b>Total</b>	135	105	142	102	80	101	95	104	100	107	99	94	1264	100%

Published January 2015

Trauma and Injury Intelligence Group

Centre for Public Health, Faculty of Education, Health and Community, Liverpool John Moores University,

2nd Floor, Henry Cotton Building, Liverpool L3 2ET

T: 0151 231 4498 | E: [tiig@ljmu.ac.uk](mailto:tiig@ljmu.ac.uk) | W: [www.tiig.info](http://www.tiig.info) and [www.cph.org.uk](http://www.cph.org.uk) | Twitter: [www.twitter.com/tiig\\_cph](https://twitter.com/tiig_cph)

<sup>5</sup> Please note that all numbers less than five have been suppressed (with \*\*\*) in line with patient confidentiality. If there is only one number less than five in a category then two numbers have been suppressed to prevent back calculations from totals.

Percentages may not add up to 100% due to rounding.

<sup>6</sup> 'Educational establishment' includes: educational establishment, school, school – other, school playground and school sport; 'Public place' includes: public place and playing out; 'Public building' includes: public building pub/club/bar - inside and pub/club/bar - outside.